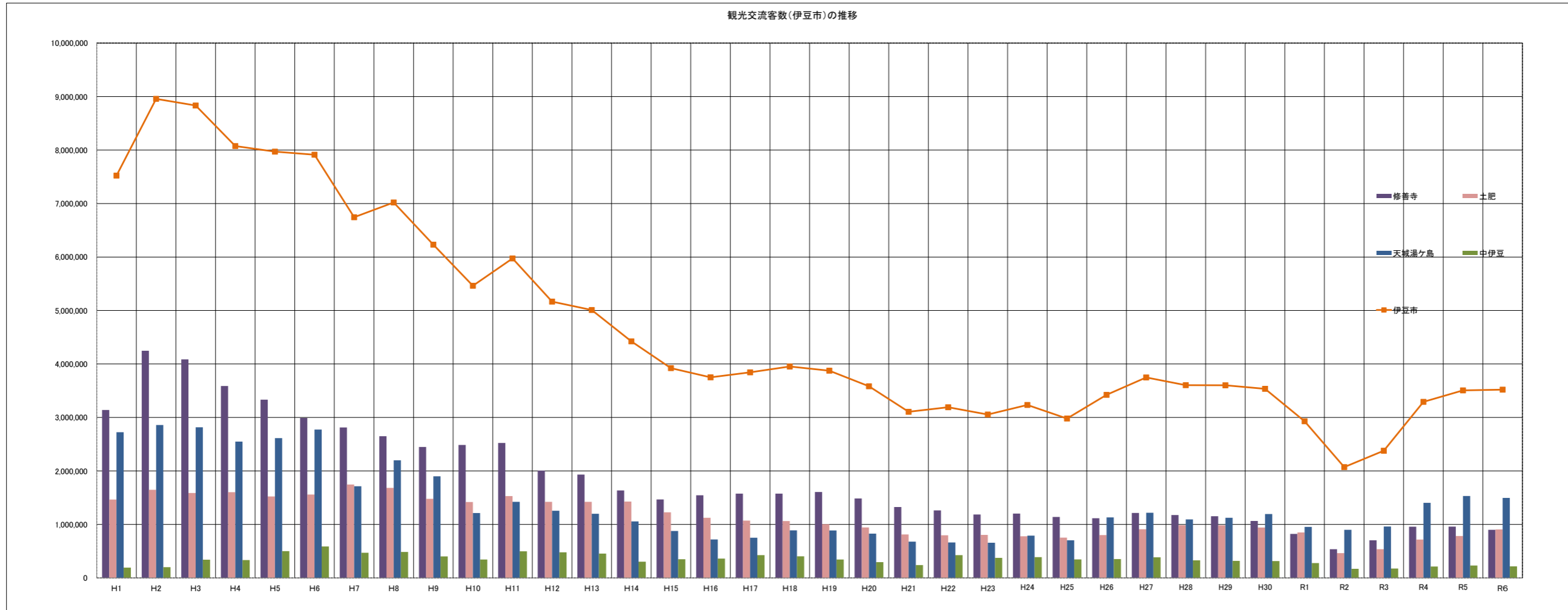


観光交流客数の推移(伊豆市独自集計)

	S63	H1	H2	H3	H4	H5	H6	H7	H8	H9	H10	H11	H12	H13	H14	H15	H16	H17	H18	H19	H20	H21	H22	H23	H24	H25	H26	H27	H28	H29	H30	R1	R2	R3	R4	R5	R6	前年比
伊豆市	9,583,978	7,521,781	8,956,897	8,832,355	8,073,998	7,971,103	7,911,763	6,744,567	7,020,233	6,231,082	5,463,393	5,974,553	5,165,774	5,009,944	4,423,772	3,921,855	3,750,340	3,844,372	3,953,348	3,875,314	3,583,102	3,105,522	3,191,364	3,054,927	3,234,444	2,980,114	3,423,472	3,748,897	3,604,228	3,601,324	3,536,387	2,928,428	2,071,868	2,378,925	3,291,521	3,506,349	3,519,796	100.4%
修善寺	3,518,138	3,139,649	4,247,092	4,086,199	3,587,614	3,332,213	2,991,212	2,813,524	2,649,515	2,449,384	2,485,614	2,524,252	2,007,534	1,932,722	1,636,724	1,467,515	1,545,993	1,576,006	1,577,111	1,606,361	1,486,007	1,325,202	1,263,003	1,185,929	1,202,821	1,139,475	1,116,771	1,214,526	1,176,221	1,153,538	1,065,382	823,225	536,685	704,280	957,435	959,280	899,757	93.8%
土肥	2,385,223	1,466,056	1,647,772	1,588,746	1,603,495	1,522,664	1,558,495	1,746,198	1,683,479	1,478,528	1,419,923	1,529,785	1,422,403	1,422,321	1,427,201	1,226,242	1,124,518	1,071,389	1,063,923	1,006,046	944,156	813,730	797,290	803,825	779,192	753,168	800,446	909,495	984,443	983,672	942,755	850,368	464,330	537,133	717,346	783,971	906,760	115.7%
天城湯ヶ島	3,273,799	2,723,829	2,860,022	2,816,528	2,548,332	2,614,518	2,774,621	1,714,550	2,200,551	1,900,056	1,213,196	1,423,343	1,256,308	1,199,340	1,056,732	877,850	718,648	751,023	889,453	887,756	828,487	679,039	662,739	657,496	791,666	703,332	1,131,773	1,218,958	1,093,946	1,124,906	1,194,976	954,702	899,777	961,134	1,404,082	1,531,197	1,496,594	97.7%
中伊豆	406,818	192,247	202,011	340,882	334,557	501,708	587,435	470,295	486,688	403,114	344,660	497,173	479,529	455,561	303,115	350,248	361,181	426,553	404,796	344,151	295,261	239,921	426,098	375,880	388,725	346,155	352,583	385,331	329,418	319,008	314,774	278,633	171,076	176,378	212,658	231,901	216,685	93.4%
健康づくりの郷(TOJ博覧会) サイクルフェスティバル																		19,401	18,065	31,000	29,191	47,630	42,234	31,797	72,040	37,984	21,899	20,587	20,200	20,200	18,500	21,500	0	0	0	0	0	0.0%

※各地のゴルフ場利用者は、県の把握数値とした。
 ※県発表数値とは誤差が生じる。(県発表値は、各観光地点の年間入込合計が千人未満の施設については対象外のため、0に修正。当値は、調査値全てを利用している。)



宿泊客数の推移

	S63	H1	H2	H3	H4	H5	H6	H7	H8	H9	H10	H11	H12	H13	H14	H15	H16	H17	H18	H19	H20	H21	H22	H23	H24	H25	H26	H27	H28	H29	H30	R1	R2	R3	R4	R5	R6	前年比
伊豆市	2,144,092	2,110,068	2,254,139	2,152,337	2,079,990	2,024,640	2,000,334	1,708,611	1,704,619	1,534,796	1,478,413	1,478,112	1,416,823	1,590,780	1,368,347	1,241,120	1,021,562	985,767	998,109	961,024	913,059	749,058	769,690	826,185	834,853	797,461	800,910	811,999	831,329	828,270	813,160	693,576	433,929	574,314	733,370	761,849	768,484	100.9%
修善寺	858,233	854,422	950,368	906,646	832,825	867,429	735,997	710,164	658,184	607,882	603,048	602,408	596,285	719,559	514,888	482,887	408,044	396,167	419,722	411,228	411,228	315,329	300,901	326,153	344,400	347,110	328,792	350,390	343,444	336,122	336,799	265,994	158,445	243,229	327,298	342,296	352,004	102.8%
土肥	726,528	713,615	769,003	692,032	695,446	650,791	651,465	587,713	623,213	559,269	543,396	534,101	518,733	569,935	595,271	499,699	390,445	366,533	367,616	345,031	311,175	247,518	264,234	318,360	302,892	254,833	277,183	274,686	303,083	306,260	289,843	273,886	173,292	222,426	269,593	273,106	272,914	99.9%
天城湯ヶ島	437,083	435,125	429,387	383,465	376,498	348,624	462,299	287,459	282,838	256,033	234,750	236,282	225,148	215,308	196,672	187,112	146,429	138,870	137,401	139,605	141,085	130,183	115,977	119,502	126,294	126,342	132,915	117,328	120,349	119,182	120,366	95,866	74,247	76,959	85,542	85,020	87,464	102.9%
中伊豆	122,248	106,906	105,381	170,194	175,221	157,796	150,573	123,275	140,384	111,612	97,219	105,321	76,657	85,978	61,516	71,422	76,644	84,197	73,370	65,160	49,571	56,028	88,578	62,170	61,267	69,176	62,020	69,595	64,453	66,706	66,152	57,830	27,945	31,700	50,937	61,427	56,102	91.3%

宿泊客数(伊豆市)の推移

